

Peel Strength Tester (Micro Digital)

Model: PEELMD

Linux Digital single Column Peel Tester is applicable in the test of physical/mechanical properties of polymers, plastic films, laminated materials, adhesives, adhesive tapes, adhesive bandage, textile, paper, protective film, leather, rubber and paper fiber etc. It can perform the test of tensile, peeling, tearing deformation, heat seal, adhesive, etc.

These multi-functional equipments incorporate imported motor & gearbox and high accurate load cell.

Applications:

- Plastic
- Rubber
- Polyurethane
- Paper and PaperBoard
- Textile

Standards:

Conforming to various Standards

Peel : ASTM D3330, D1876

Tear : ASTM D1938

Seal : ASTM F88

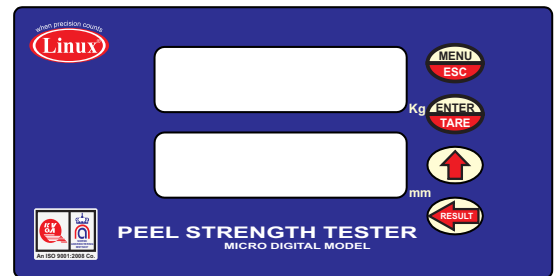
Bond : ASTM F904

Machine Features:

- Single push button operates automatic test cycle.
- Digital display for load and elongation.
- A large LCD Display shows the test result.
- Result through Control panel: Peak load, Elongation at peak load.
- Tare buttons for load & displacement.
- Variable Speed with the help of A.C. Drive
- Auto Calibration in 5 simple steps.
- Safety interlock by end limit switches and by overload sensing.

Specification:

Model	PEELMD					
Load Capacity	5 kgf	10 kgf	20 kgf	50 kgf	100 kgf	500 kgf
Load least count	0.001 kgf		0.01 kgf			
Displacement least count	0.1 mm					
No. of Load cell	One					
Miximum speed	500 mm/min					
Minimum speed	10 mm/min					
Crosshead Stroke	500 mm					
Measuring Unit	kgf, lbf & N & mm					
Height	1400 mm					
Width	550 mm					
Depth	420 mm					
Net weight	105 kgs					
Gross weight	155 kgs					
Power	220 VAC, 50 Hz, Single Phase					



Controller Key Board

Notes:

1. Total crosshead travel is calculated with load cells, grips and fixtures. Longer strokes can be accommodated by ordering an extended column frame.
2. Peel test grips supplied with machine.
3. Other capacity and size also available on request.

Grips and Fixtures

LINUX offers a full line of grips and fixtures for materials and product testing. The grips and fixtures that we sell support our entire line of new universal testing machines. They can also be used with virtually any manufacturers test frames and with LINUX retrofitted equipment. The grips shown are some of the most common. If you do not see the grips or fixtures you need then please ask us.

Heavy Duty Grips For Polymer and Rubber

Tensile Force: 20 & 50KN
 Opening: 0-12mm
 Clamping Surface Size: 30x50mm and 50x50mm
 Clamping Surface: Plain, Rubber, Serrated.



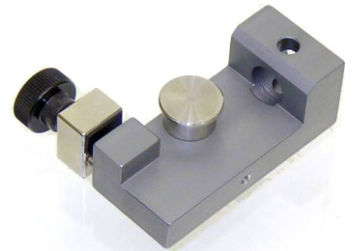
Universal Grips For Polymer, Thin Plastic, Polyfilm, Textile, Fabric, Rubber, Tissue, Paper and Paperboard.

Tensile Force: 0.5, 1, 2, 5 and 10KN
 Opening: 0-10mm
 Clamping Surface Size: 25x25mm, 50x30mm and 50x50mm
 Clamping Surface: Plain, Rubber, Serrated.



Yarn Grips

Tensile force: 500N
 Max diameter: 2mm
 Max width: 7mm
 Diameter guide roller: 20mm



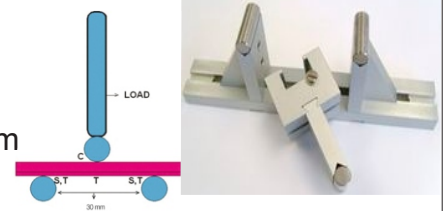
Small Grips for Polyfilm, Tissue, Paper and Paperboard

Tensile force: 500N
 Opening: 6mm
 Opening: 25x25mm and 50x25mm
 Clamping Surface: Plain, Rubber, Serrated (any one)



3 Point Bending Fixtures

Capacity: 5kN
 Maximum Span: 150mm
 Support Width: 30mm Upper Support Radius: 1, 1.5, 2, 3.2, or 5mm
 Lower Support Radius: 1.5mm & 2.5mm, 2mm & 3mm, or 3.2mm & 5mm
 Other size on request.



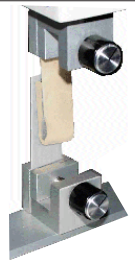
Compression Plate

Diameter of platen: 50 to 300mm
 Max capacity: up to 50kN of forced



180 Degree Peel Fixture:

Perform 180 peel tests according to ASTM D3330 and other industry standards using this fixture designed for universal testing machines. Consists of 9" x 2" polished stainless steel plate which is clamped in a lower grip. One end of the sample is adhered to the plate and the other end is clamped in place by the upper grip. The sample is peeled off of the plate and the strength is measured.



90 Degree Peel Fixture

Self adjusting sliding bed for 90 degree peel tests. The test plate moves in a horizontal position and is driven by connections to the moving crosshead in order to maintain a 90 degree peel angle. Usable bed dimensions: 300 x 80mm.



Carton Opening Force Fixture

Upper Support Length: 75mm
 Lower Support Length: 300mm

