

Top Load Tester (Micro PC)
Model: TLT/MPC300

Bottle Compression Tester is an efficient and easy to use equipment intended for measuring the ability of bottle to resist external compressive forces. This method describes how to determine the resistance of a bottle to compressive forces. This is accomplished by placing the bottle between two flat platens, one of which is mechanically driven to compress the bottle. A recording device is incorporated to indicate the force required to compress the bottle.

The compressive forces are related to some of those exerted on bottles in stack or encountered in transportation. The method is used to compare the compressive resistance of different lots of similar bottles or to compare bottles of different grades. In addition the information gained may be used to provide an indication of the load that a particular bottle may be able to withstand in service.

Applications:

- PET bottles
- Blow molded containers
- Corrugated Box
- Duplex cartons

Specifications:

- Measuring range (Optional): 100, 200 & 500 kgf
- Measuring Unit: kgf, lbf & N
- Load least count: 0.1 kgf
- Deflection least count: 0.1 mm
- Accuracy: +/- 1% of reading
- Test speed: 12.7 mm/min (changeable)
- Location speed: 180 mm/min
- Platen Size: 300 x 300 mm
- Space between compression plate: 325 mm
- RS 232 Port, with necessary software, to transfer data to computer(computer to be provided by user)
- Power: 0.4 kw, 220 VAC, 50Hz Single Phase.



Manual Screen

Software:

The software program for Top Load Tester is automatic. Once the Test Configuration menu has been programmed, Start button is pressed, initiating the test. The results of the test are displayed on the PC in real time. They can then be saved and/or printed for later use.

Features:

- The machine is microprocessor controlled capable of highly accurate and precise load measurements and rapid data acquisition.
- Machine can be operated through PC with the provided software.
- When test stops the platen moves up automatically.
- The integral user interface consists of a control console with large, positive action cap sense keypad, allowing test to be performed at the touch button.
- A large, backlit Crystal Display show the test and set-up information.
- Data management is easy. Users can create their own specific identification numbers and view data at any time. stored data can be re-displayed or printed as a table, histogram, or a control chart.
- Programmable User Name, Product Name, Vender/Customer Name, Codes, Lot No., ect.
- Graph for immediate visual review.
- Windows based software.
- Auto Calibration in 5 simple steps.
- Overload protection (Preset)

Standards:

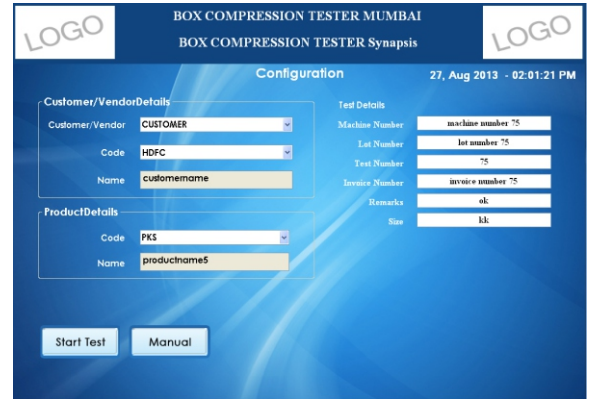
- TAPPI T 804
- ASTM D 2659
- DIN 55440-1:99

Dimensions:

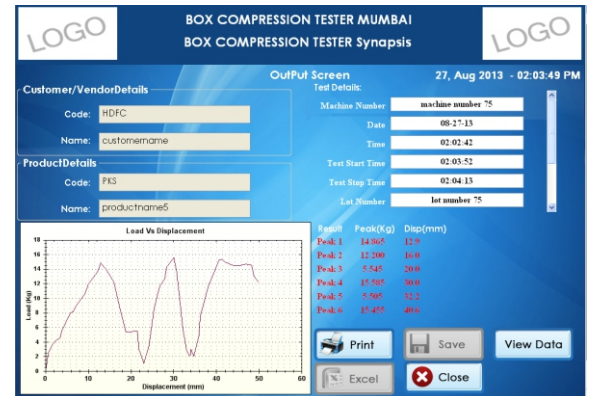
- Depth: 425mm
- Height: 985mm
- Width: 650mm

Weight:

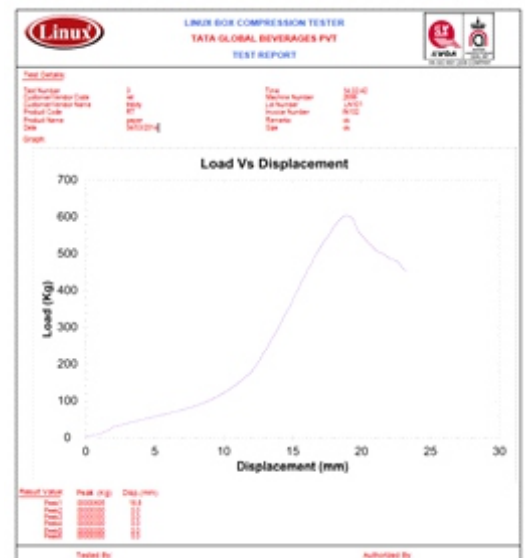
- Net Weight: 140 kgs
- Gross Weight: 200 kgs



Sample Test Configuration Screen



Sample Test Report



Printed Report